


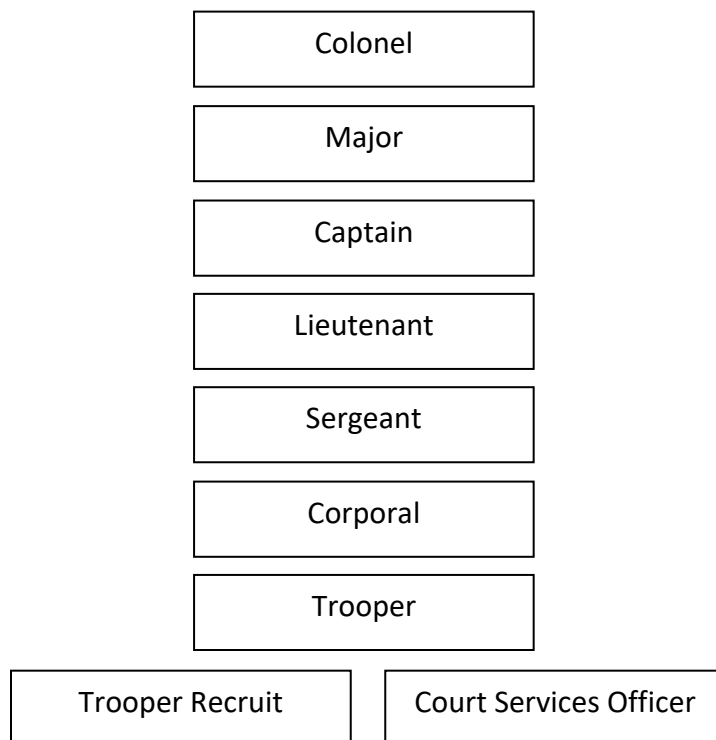
DEPARTMENT OF PUBLIC SAFETY OPERATING PROCEDURES MANUAL		
CHAPTER 12	RANK	
	Effective: 08/02/2017	Commissioner Approval: <i>[Signature]</i>
	Authorities:	
	Applicability: ALL DEPARTMENTAL EMPLOYEES	
	Special Instructions:	

12.300 ENFORCEMENT RANKS

The Commissioner is the highest-ranking official in the department and is considered the chief law enforcement officer for the state, followed by the Deputy Commissioner.

The hierarchy and levels of authority of the enforcement ranks of the Department are listed below. Supervisor / subordinate roles for other job classes and for civilian employees are defined on Department organizational charts.

A. *Hierarchy of AST and AWT ranks.* The Divisions of Alaska State Troopers and Alaska Wildlife Troopers use the paramilitary police rank model that is common to law enforcement across the United States. The following is how the rank structure applies to AST and AWT from highest to lowest rank.



- B. *Hierarchy of Fire and Life Safety ranks.*** The Division of Fire and Life Safety uses the rank structure that is common to the fire service across the United States. The following is how the national rank structure applies to the Division of Fire and Life Safety from highest to lowest rank. The AST/AWT equivalent rank is provided for comparison purposes.

DFLS Position	Fire Service Rank	AST/AWT Equivalent Rank
State Fire Marshal	Fire Chief	Colonel
Assistant Fire Marshal	Deputy Fire Chief	Major
Bureau Supervisor	Assistant Fire Chief	Captain
Deputy Fire Marshal	Battalion Fire Chief	Corporal
Fire Training Specialist	Battalion Fire Chief	Corporal
Plans Examiner	Battalion Fire Chief	Corporal

- C. *Determination of command hierarchy.*** For the purposes of command hierarchy, seniority shall be determined first by rank, second by length of service in rank.